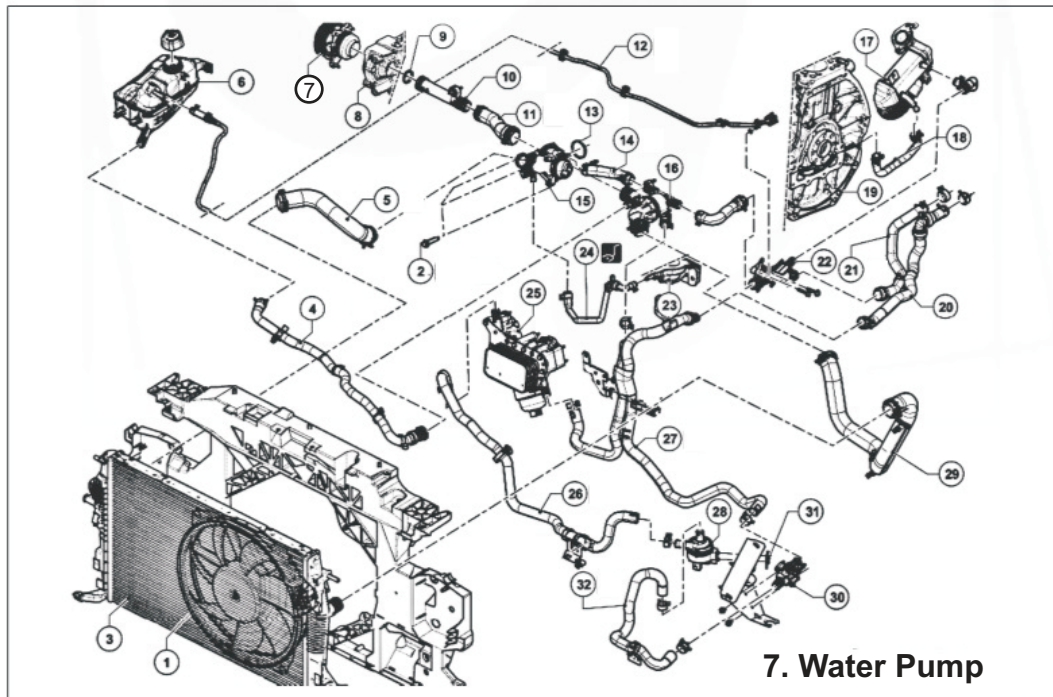


## TECHNICAL INFORMATION

Part Number: **1964**

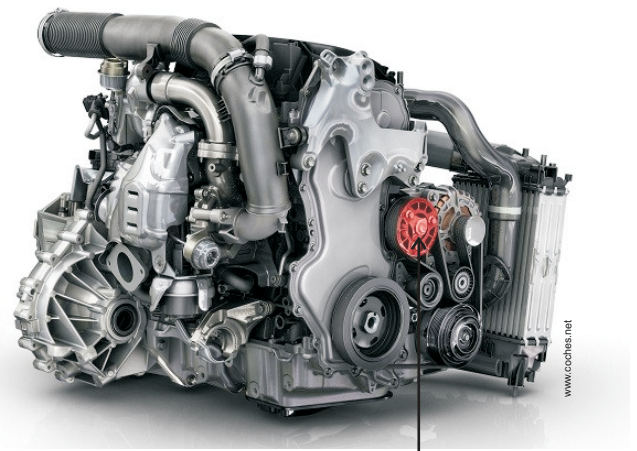
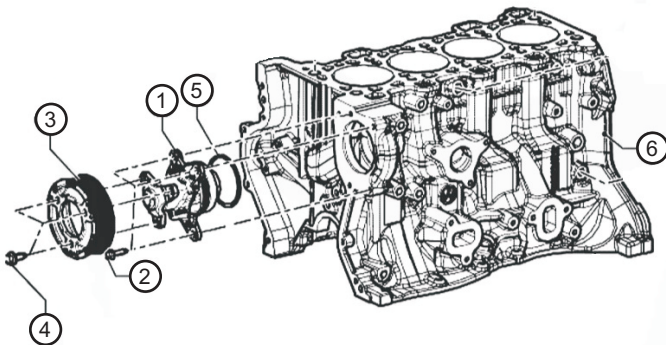
Renault Fluence - 1.6 dCi engine (R9M)

Cooling circuit



Tightening torque
Water pump bolt ② : 10 Nm
Water pump pulley bolt ④ : 10-20 Nm

1.6 dCi engine



- 1. Water Pump**
- 2. Water Pump Bolts
- 3. Water Pump Pulley
- 4. Water Pump Pulley Bolts
- 5. 'O' Ring
- 6. Engine Block

**Water Pump**

## TECHNICAL INFORMATION

### How to Remove the Auxiliary Belt and Change Water Pump

*Specific tools:*

- They are not necessary.

#### Disassembly

For the most common for vehicles, the initials steps are to disconnect the battery and remove all necessary components to gain access to auxiliary belt; for example, the right front wheel, wheel arch, motor bracket, plastic covers and so on.

Each vehicle may have, more or less, the same components to remove which are specified on the manufacturer's repair manual.

- 1 The next step is to drain the cooling circuit.
- 2 Turn the tensioner (3) [FIG. 1] to remove the auxiliary belt (7) [FIG. 1].
- 3 Remove the water pump (2) [FIG. 1].

**AIRTEX. RECOMMENDS:**

- 4 Clean the cooling circuit and replace all belt drive components if necessary.

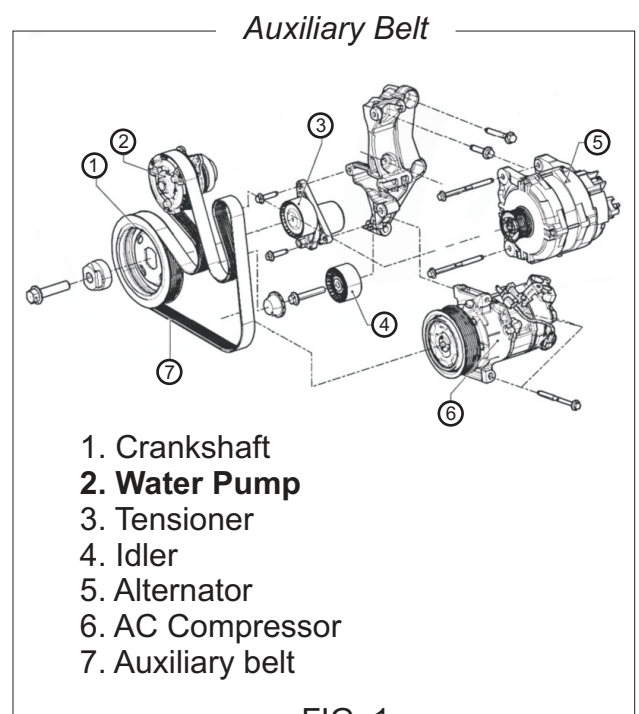
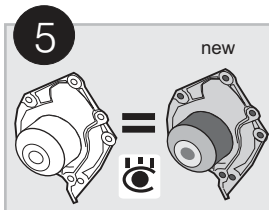


FIG. 1

#### Assembly

- 1 Fit the water pump pulley and then the water pump.
- 2 Turn the tensioner to fit the auxiliary belt then release the tensioner for the belt to be tensioned.
- 3 Proceed with the rest of the assembly.



**Please note:** Fill up the cooling circuit with a suitable coolant and antifreeze before switching on the engine.

**AIRTEX. RECOMMENDS:**

