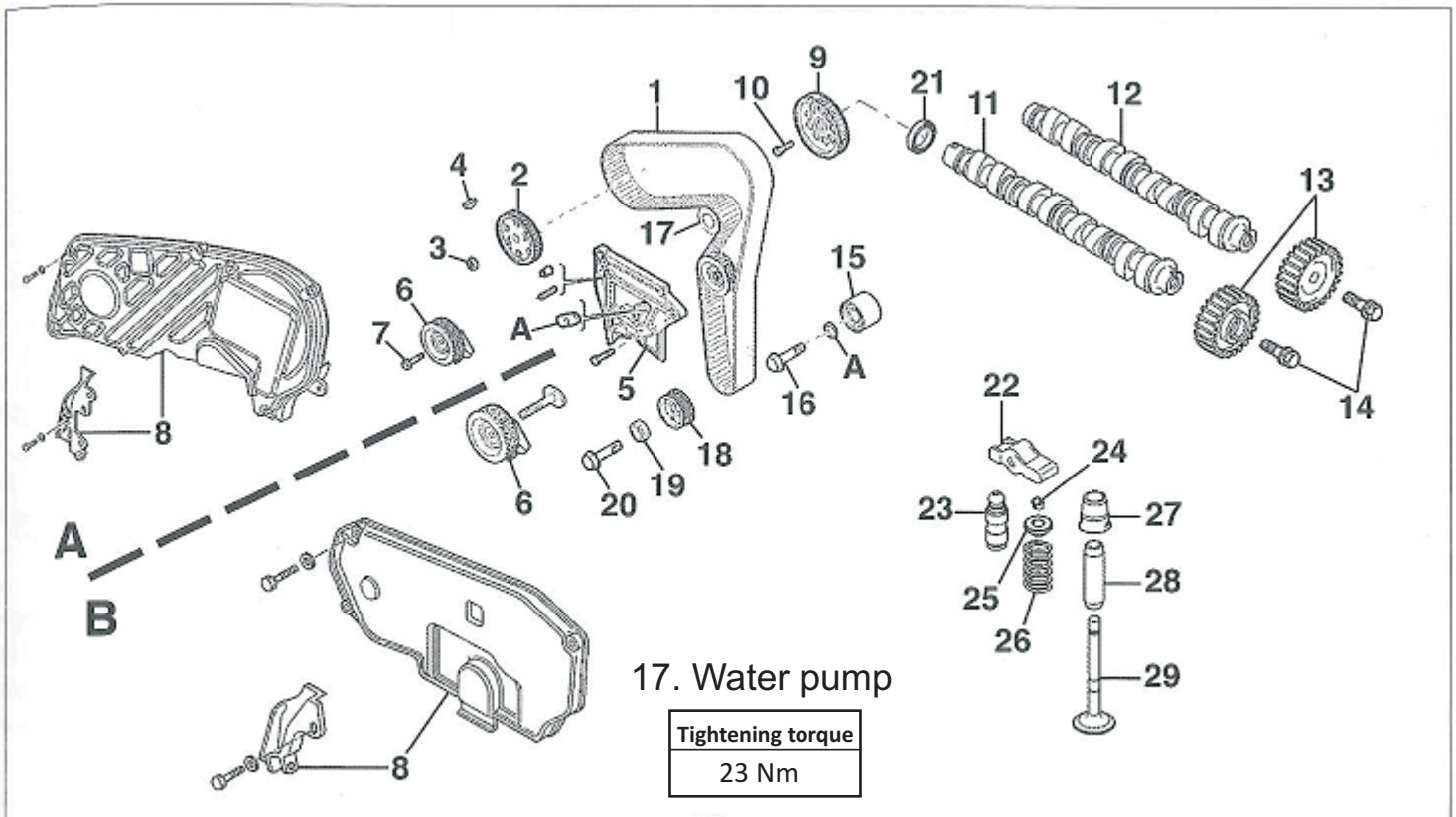


TECHNICAL INFORMATION SHEET

PART NUMBER: **1702R**

Alfa Romeo 159 - 1.9 y 2.4 JTDM engine (939A2000 / 939A3000)



Timing belt and Water pump Change

Specific tools:

- Lock pin exhaust camshaft [FIG. 1] (10).
- Specific tools to lock the crankshaft [FIG. 2].
- Lever to lock the camshaft pulley.

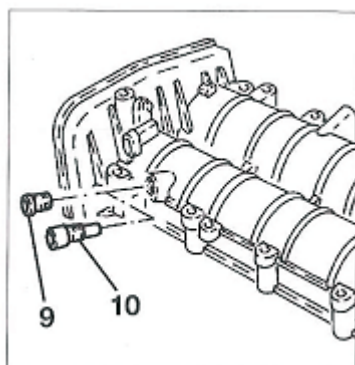


FIG. 1

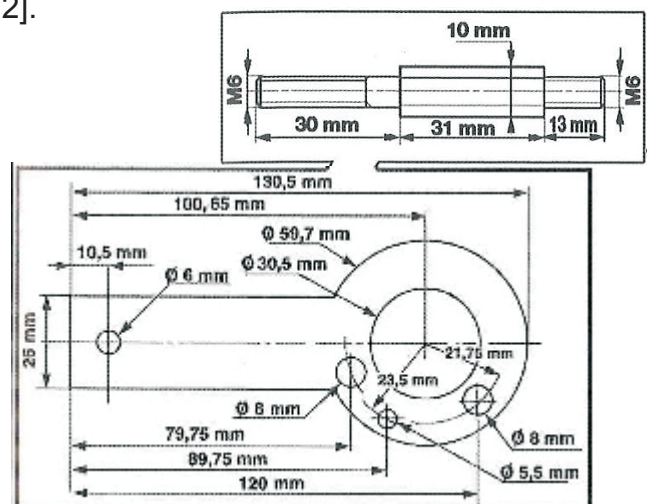


FIG. 2

TECHNICAL INFORMATION SHEET

Disassembly

The first steps, the most common for vehicles, are to disconnect the battery and dismount all necessary components to gain access to timing belt, such as right front wheel, wheel arch, auxiliary belt, crankshaft pulley, motor bracket, plastic covers,...

Each vehicle may have fewer or more components to dismount, which are specified in the vehicle repair manuals.

- 1 The next step is to drain the cooling circuit and turn the crankshaft until cylinder n°1 is positioned at TDC.
- 2 Replace the exhaust camshaft bolt [FIG. 3] (9) by lock pin exhaust camshaft (10).
- 3 Loosen tensioner nut and dismount timing belt.
- 4 Hold the camshaft pulley with the specific tool and then loosen camshaft pulley bolt.
- 5 Remove the water pump.

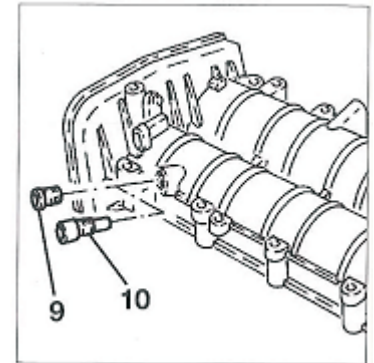
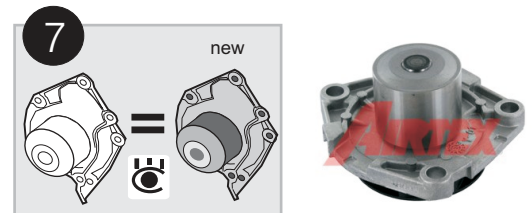


FIG. 3

AIRTEX. RECOMMENDS:

- 6 Clean the cooling circuit and replace all belt drive components.



Assembly

- 1 Fit the timing belt at crankshaft pulley.
- 2 Replace engine block bolt by specific tools to lock the crankshaft [FIG. 5] (4 and 6), making sure that the mark (5) matches. After, mount the timing belt.
- 3 Push the tensioner with a screwdriver until mobile indicator is placed at maximum tension.

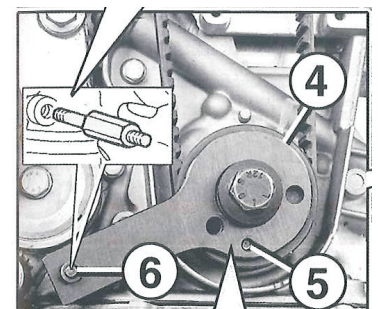


FIG. 5

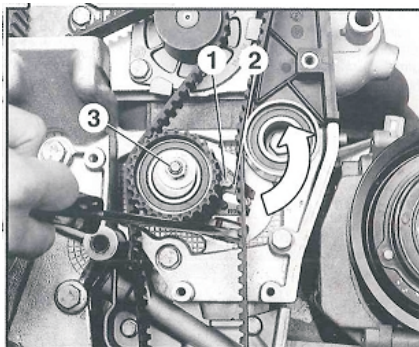


FIG. 6

- 4 Hold the camshaft pulley with the specific tool and then tighten camshaft pulley bolt.
- 5 Remove specific tools and rotate the crankshaft turning it 4 times to check the correct assembly.
- 6 Loosen the tensioner nut and push it until mobile indicator [FIG. 6] (1) is aligned with the mark (2), then tighten the tensioner nut (3).
- 7 Proceed with the rest of the assembly.

AIRTEX. RECOMMENDS:

PLEASE NOTE: Fill up the coolant circuit with a suitable coolant and antifreeze before switching on the engine.

