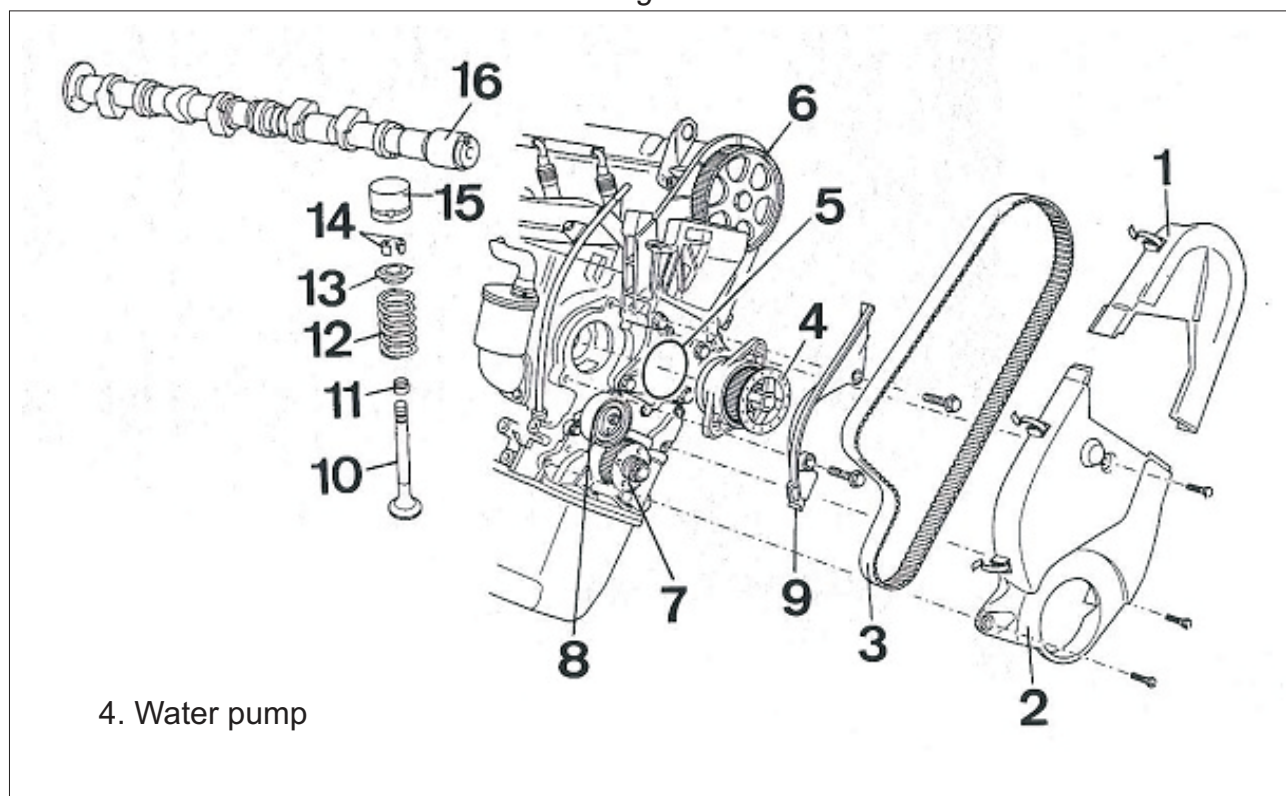


TECHNICAL INFORMATION SHEET

PART NUMBER: **1582R**

Seat Arosa - 1.0i 8v. Engine (AER)

Timing belt



Timing belt and the Water pump Change

Replacement interval: every 90.000 km.

Specific tools:

They are not necessary.

Disassembly

The first steps, the most common for vehicles, are to disconnect the battery and dismount all necessary components to gain access to timing belt, for example, the right front wheel, wheel arch, auxiliary belt [FIG. 1], crankshaft pulley, motor bracket, plastic covers,... Each vehicle may have fewer or more components to dismount, which are specified in the vehicle repair manuals.

Auxiliary belt

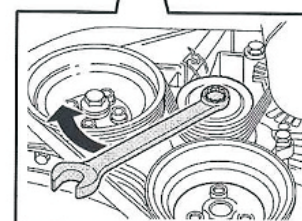
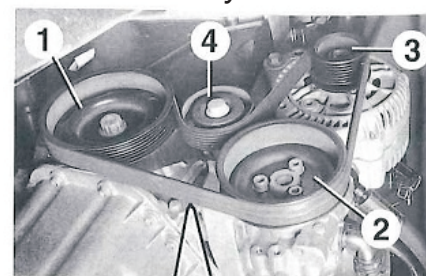


FIG. 1

TECHNICAL INFORMATION SHEET

Disassembly (continuation)

- ① The next step is to drain the cooling circuit and turn the crankshaft until cylinder n°1 is positioned at TDC.
- ② The reference marks A and B must be aligned [FIG. 2].
- ③ Loosen the tensioner nut.
- ④ Remove the timing belt and the water pump.

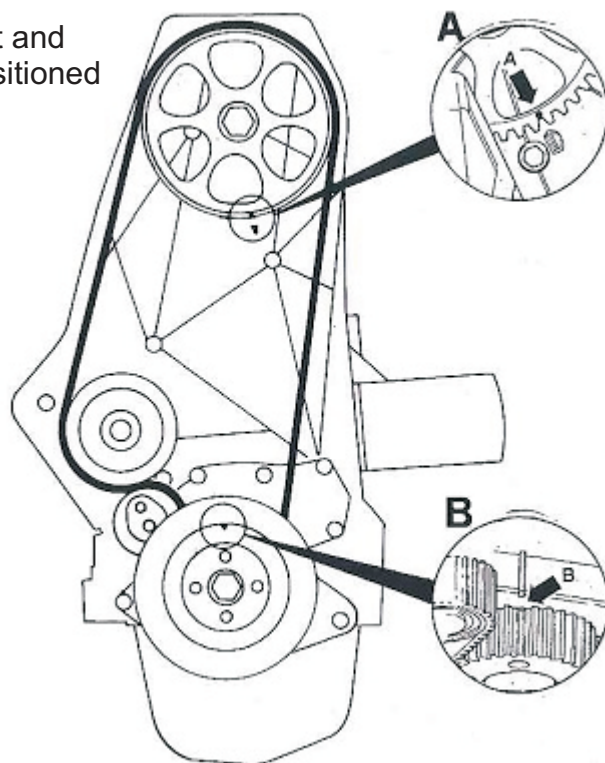
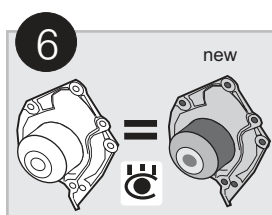


FIG. 2

AIRTEX® RECOMMENDS:

- ⑤ Clean the cooling circuit and replace all belt drive components.



Assembly

- ① Mount the timing belt starting with the crankshaft pulley.
- ② Turn the tensioner clockwise until the mobile indicator is aligned with the groove [FIG. 3] (1) and tighten the nut (20 Nm).
- ③ Rotate the crankshaft turning 4 times to check the correct assembly. After, make sure that the mobile indicator is aligned with the groove [FIG. 3] (1).
- ④ Proceed with the rest of the assembly.

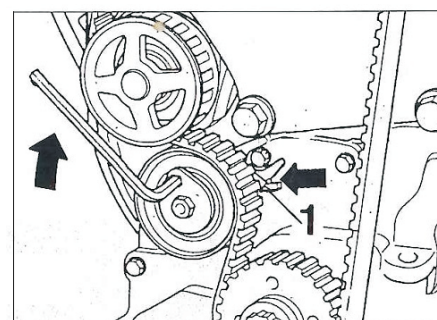


FIG. 3

AIRTEX® RECOMMENDS:

PLEASE NOTE: Fill up the coolant circuit with a suitable coolant and antifreeze before switching on the engine.

