

## TECHNICAL INFORMATION SHEET

PART NUMBERS: 1515 / 1680

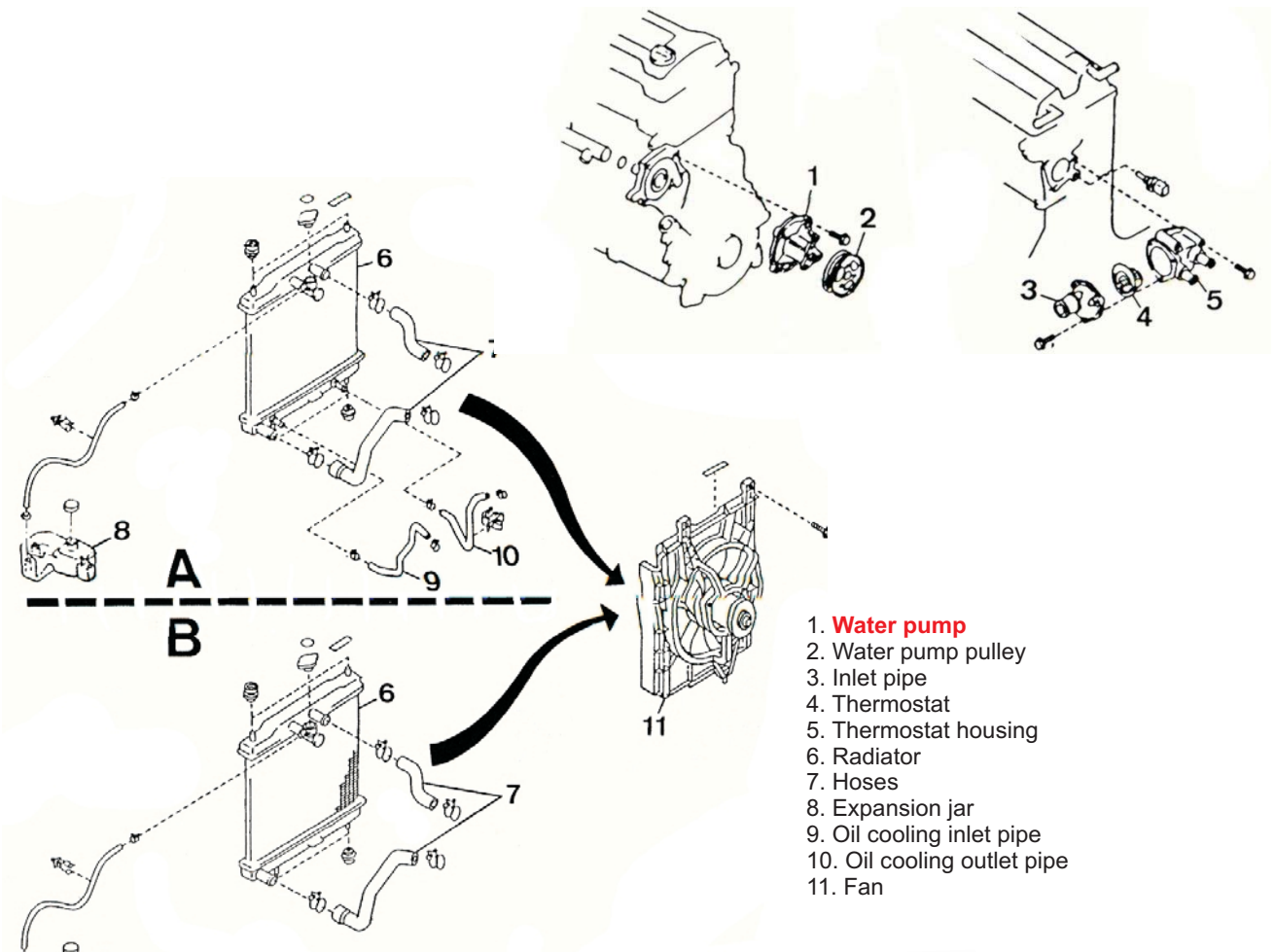


1515

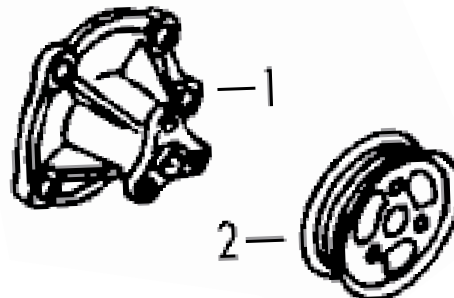


1680

Example: Cooling system from a Nissan Micra 1993 (PN. 1515)



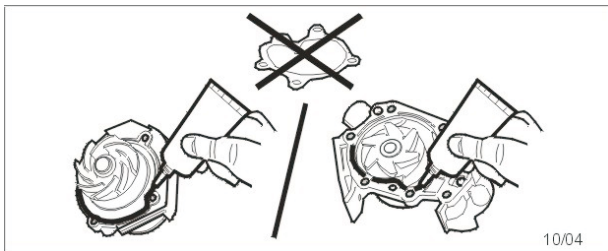
- 1. Water pump
- 2. Water pump pulley
- 3. Inlet pipe
- 4. Thermostat
- 5. Thermostat housing
- 6. Radiator
- 7. Hoses
- 8. Expansion jar
- 9. Oil cooling inlet pipe
- 10. Oil cooling outlet pipe
- 11. Fan



## TECHNICAL INFORMATION SHEET

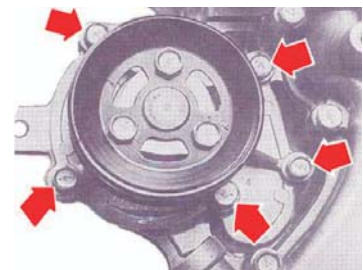
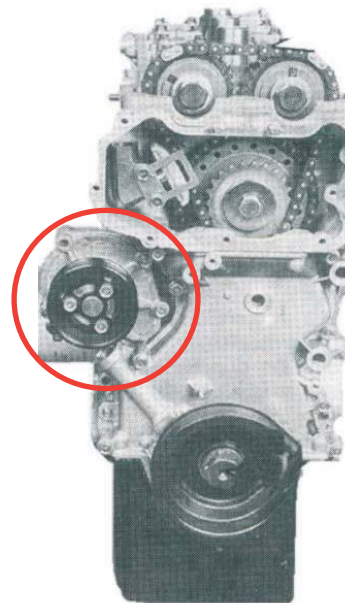
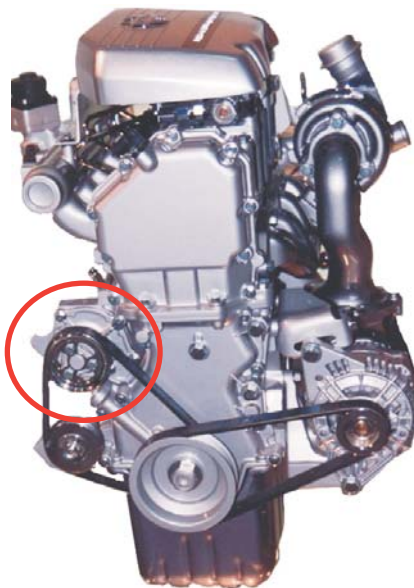
PART NUMBERS: **1515 / 1680**

*Pump without gasket, there is a sealant application zone in the water pump.*



*Do not apply excessive sealant*

*Mounting and adjustment of distribution*



The water pump is driven by a belt

*Torque: 0,7 daN.m*